

# Phyloncology, LLC

Universal, Non-Invasive Cancer Detection

Revolutionizing Cancer Early Detection & Diagnosis

# Mission & Vision

---

- **Deliver the fastest and most accurate universal cancer detection platform**
- **Enable early detection across cancer types, reduce mortality worldwide, and transform global oncology diagnostics.**





# Problem

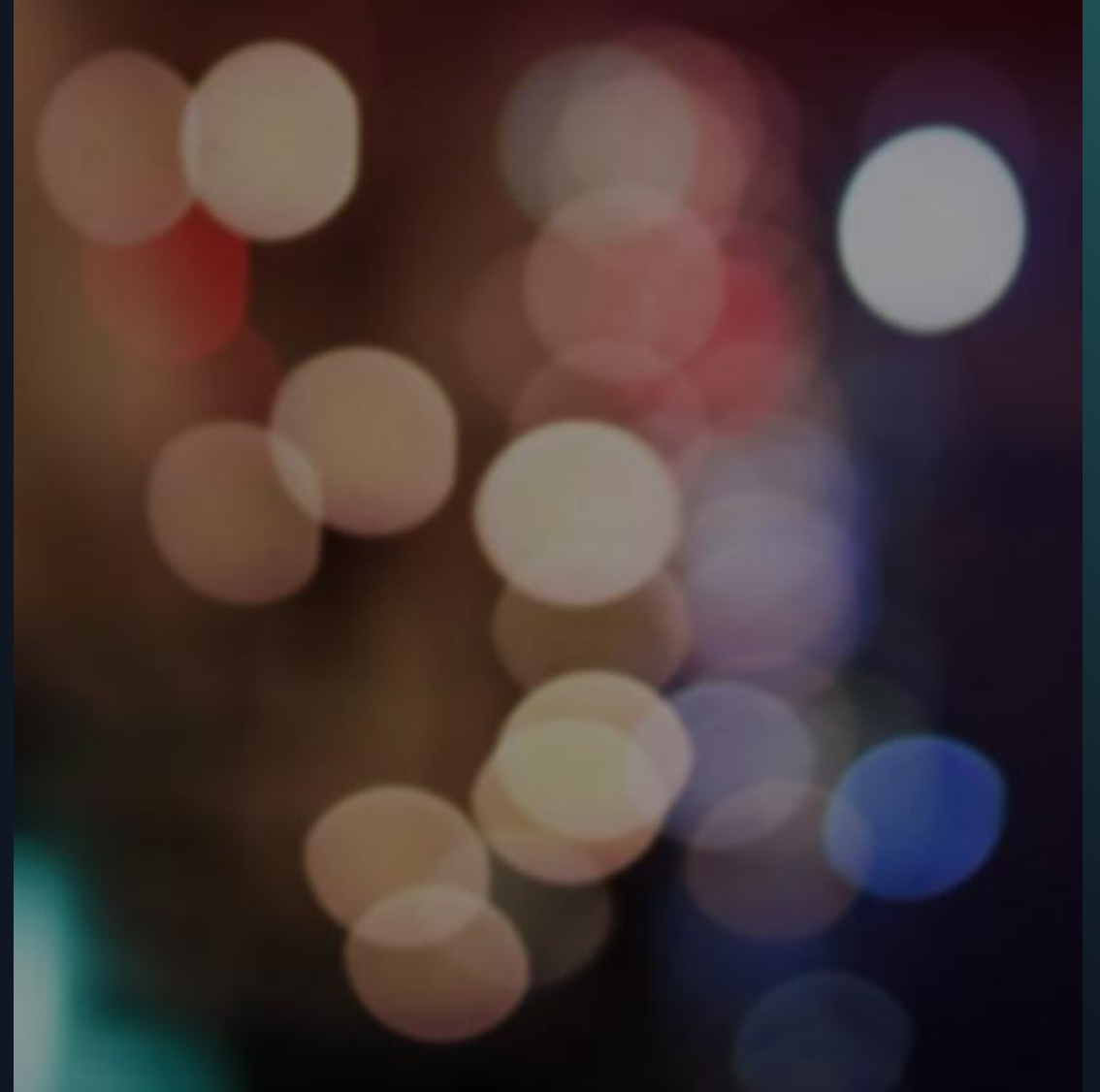
---

- Cancer heterogeneity limits traditional biomarker-based diagnostics
- Late detection drives poor outcomes and high costs
- Invasive biopsies are inefficient for screening

# Solution



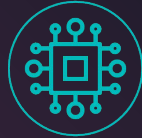

---

- A patented analytical platform based on **phylogenetics and evolutionary biology** that reveals cancer signatures from complex biological data.
- Non-biomarker dependent approach
- Transforms biological variability into signal



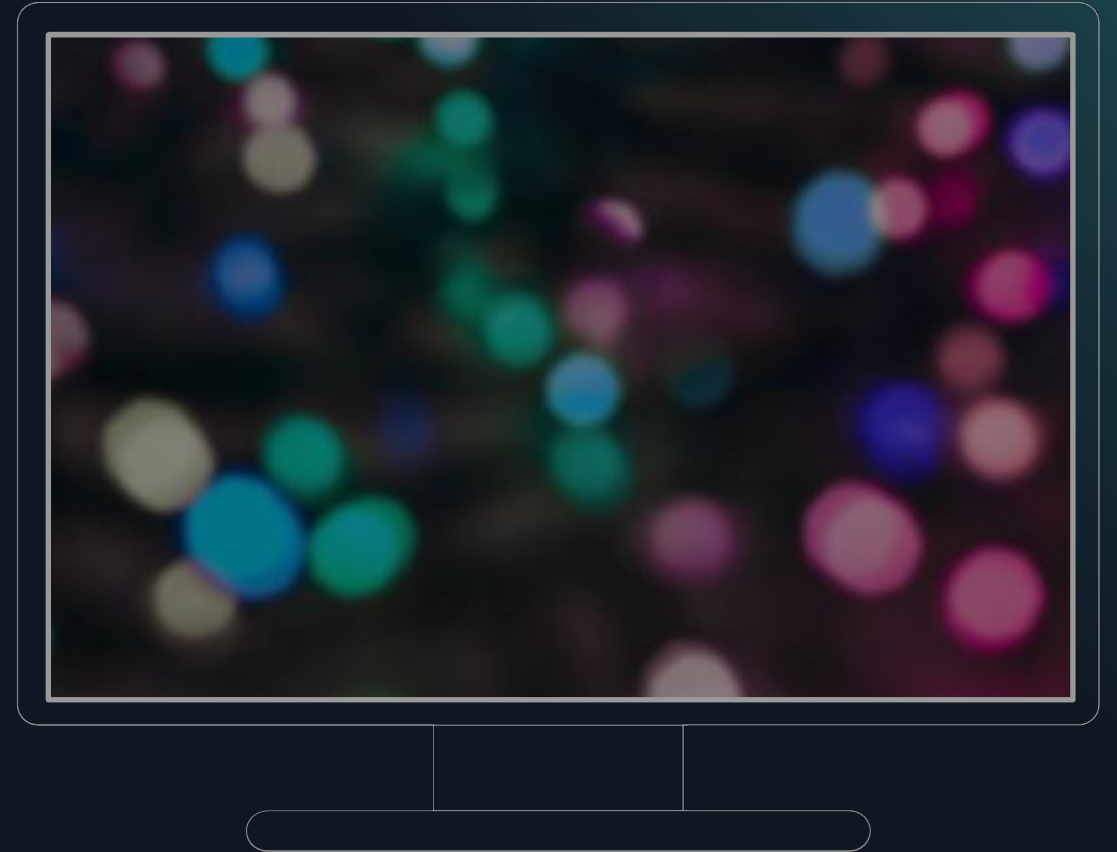
# How It works

---

-  • Patient provides a blood sample during routine care.
-  • Standard mass spectrometry generate high-dimensional data (~\$100)
-  • Data input into Phyloncology platform.
-  • Platform maps to robust baseline cladograms to classify: Healthy, Transitional (early detection), Cancerous. All in real time.

# Competitive Advantage

- Universal cancer applicability
- Non-invasive and scalable
- Cost-effective compared to existing diagnostics
- Handles biological heterogeneity



# Scientific & Clinical Validation

---

- Clear separation of healthy vs cancer cohorts
- Distinguishes primary vs metastatic disease
- Validated across multiple biological data types
- Successfully classifies physiological differences in serum data.

Multiple peer-reviewed studies underpin methodology.



# Business Model

## Revenue Streams and Expansion

1

### Revenue

- Direct diagnostic fees (\$250 per screening, includes \$100 lab processing)
- Bundled multi-cancer packages

2

### Partnership

- Integrations with hospitals & labs
- Insurance reimbursement after regulatory approval

3

### Expansion

- Begin with U.S., then global rollout.



# OUR TEAM



**Dr. Mones Abu-Asab, PhD**

*Co-Founder*  
*Evolutionary and oncology*  
*expert*



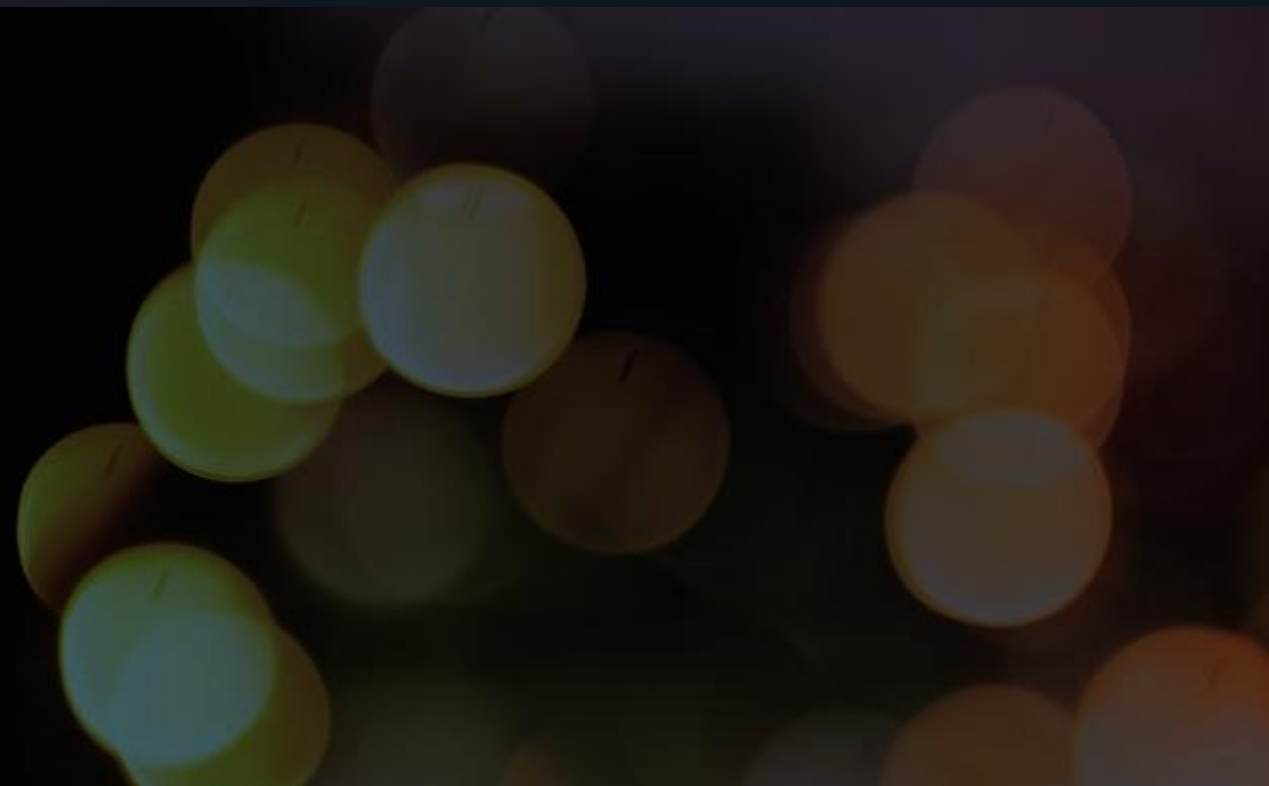
**Mohamed Chaouchi, MS**

*Co-Founder*  
*Technological and strategy*  
*leader*

# Why Invest Now



- Strong scientific foundation and IP
- Platform scalability across cancers
- Early mover advantage in evolutionary diagnostics



# CALL TO ACTION

---

- Seeking strategic investors and partners
- Join us in transforming cancer detection